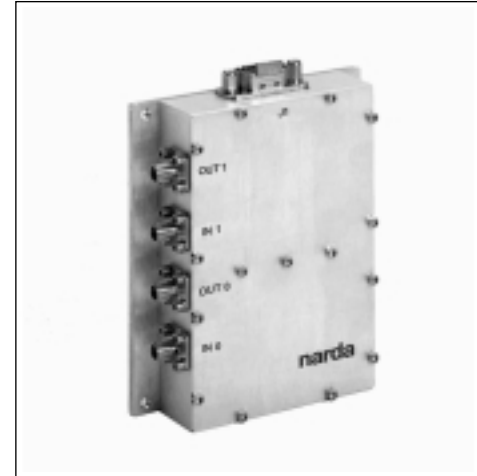


Low Noise Amplifiers

WIRELESS LOW NOISE AMPLIFIERS

- Exceptional Combination of Low Noise and High Linearity
- Single and Dual Channel Models
- Built-In Alarm Circuitry
- Excellent for Base Station Applications



DESCRIPTION

Narda has a line of exceptionally high linearity, single and dual channel low noise amplifiers for the most demanding wireless base station applications. These LNA's are installed in the latest CDMA, TDMA and EDGE systems currently being fielded by major OEM's and models are available covering the PCS, GSM, AMPS, SMR and W-CDMA frequency bands.

The models listed in the following table are unconditionally stable balanced designs with excellent input and output VSWR's that are typically better than 1.15:1 and are guaranteed not to exceed 1.25:1. Pass band flatness is typically within 0.25 dB and all noise figure specifications are given for 25°C. Current alarm outputs are available on most models.

SPECIFICATIONS

MODEL	FREQUENCY (MHz)	NOISE FIGURES dB (TYP. / MAX.)	GAIN (dB)		2-TONE OIP3 (dBm)		PKG DRWG.	TEMP. RANGE	SUPPLY V / mA
			NOM.	MIN. / MAX.	PIN	TYP. / MIN			
AD0850-1-17-35	824 - 849	0.9 / 1.1	17	16 / 18	-15	35 / 33	A	0 - 85°C	15 / 450
AD1910-1-17-35	1850 - 1910	1.15 / 1.35	17	16 / 18	-15	35 / 33	A	0 - 85°C	15 / 450
AD0850-1-27-42	824 - 849	0.75 / 1.0	27	26 / 28	-15	42 / 39	A	0 - 85°C	15 / 500
AD1910-1-27-42	1850 - 1910	1.0 / 1.2	27	26 / 28	-15	42 / 39	A	0 - 85°C	15 / 500
AD1785-1-29-43	1710 - 1785	1.1 / 1.3	29	28 / 30	-20	43 / 40	A	0 - 65°C	15 / 625
AD1785-1-24-47	1710 - 1785	0.95 / 1.15	24	23 / 25	-15	47 / 44	A	0 - 65°C	15 / 550
AD1910-1-24-47	1850 - 1910	1.0 / 1.2	24	23 / 25	-15	47 / 44	A	0 - 65°C	15 / 550
AS0925-1-14-48	887 - 925	1.2 / 1.4	14	13 / 15	0	48 / 45	B	0 - 65°C	10 / 1250
AS1910-1-17-24	1850 - 1910	0.70 / 0.90	18	17 / 19	-20	24 / 22	C	0 - 85°C	5 / 60
AD0850-1-12-30	824 - 849	0.80 / 1.1	12	11 / 13	-20	35 / 32	A	0 - 65°C	27 / 270

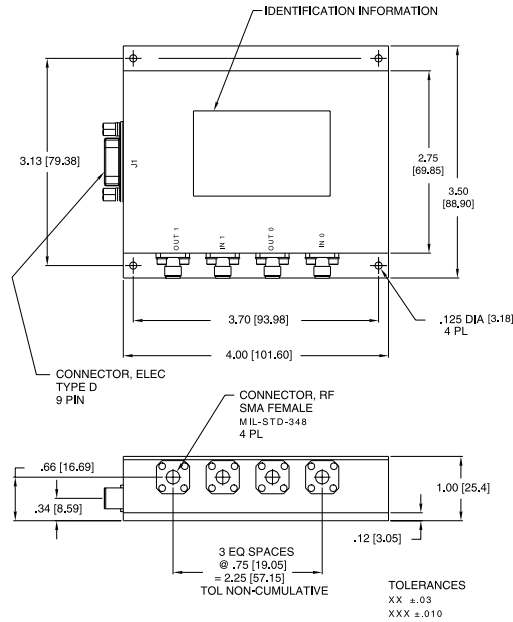
AMPLIFIER CAPABILITIES

Narda can support noise figures down to 0.3 dB typical at up to 3 GHz using a single ended approach, special alarm configurations and higher level integrated filter-LNA-converter assemblies. In addition, any of the Dual

LNA's can also be supplied as single channel units, in the 'C' package outline. Inquiries regarding 3G or other requirements beyond what are published herein are welcome.

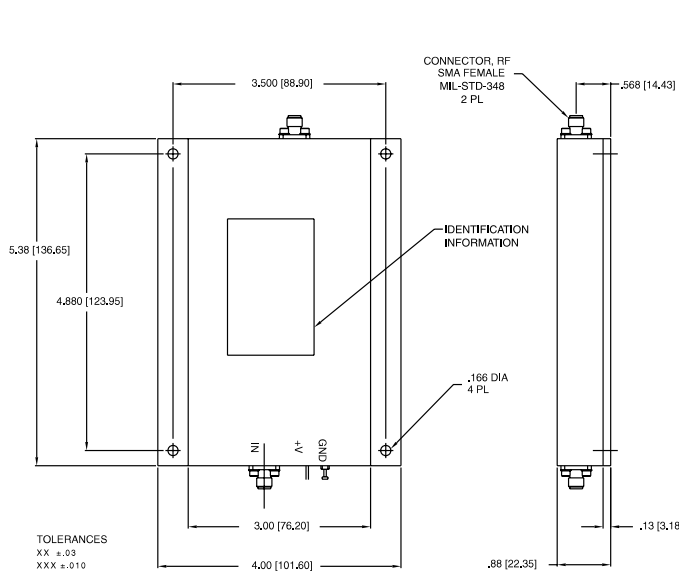
Low Noise Amplifiers

OUTLINE DRAWINGS



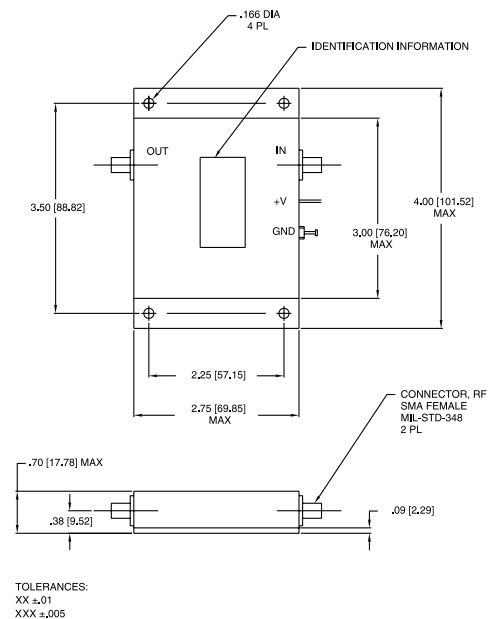
DRAWING A

**MODEL NUMBERS: AD0850-1-17-35, AD1910-1-17-35, AD0850-1-27-42, AD1910-1-27-42
AD1785-1-29-43, AD1785-1-24-47, AD1910-1-24-47, AD0850-1-12-30**



DRAWING B

MODEL NUMBER AS0925-1-14-48



DRAWING C

MODEL NUMBER AS1910-1-17-24